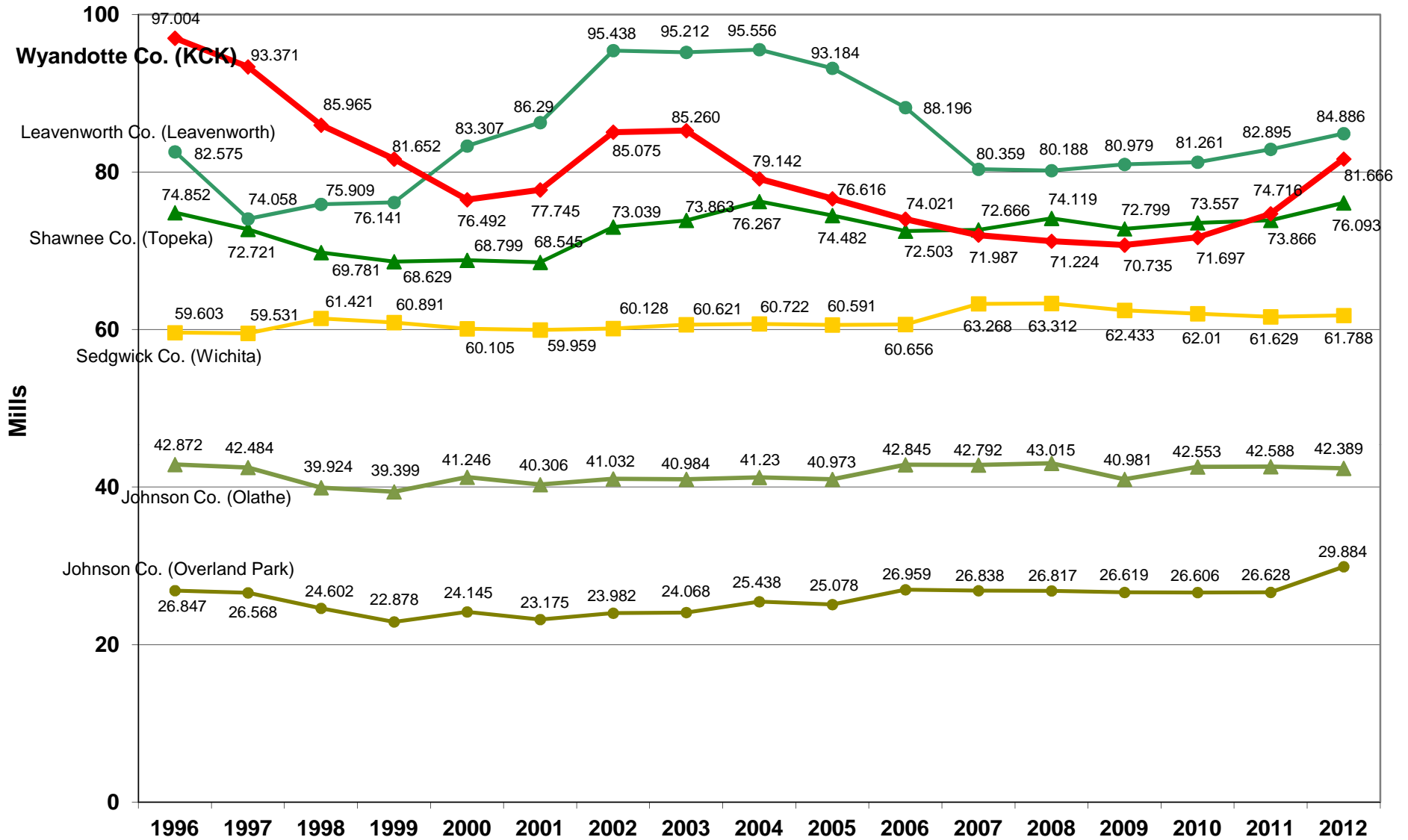


City & County Combined Mill Levy Comparison¹

Tax Rates for Select Kansas Cities, 1996 - 2012 Budget Years



Source: Kansas Govt. Journal Tax Rate Books, 1996 thru 2012.

¹City and county mill levy rates are for that jurisdiction only and represents only a portion of a residents tax bill.

Note: Shown on this graph are select entities and associated city/county mill levies for comparison with Wyandotte County & Kansas City combined mill levies.

City and County Mill Levy Rates for Select Counties/Cities in Kansas

Budget Year	Wyandotte Co.			Leavenworth Co.			Johnson Co. (Olathe)			Johnson Co. (OP)		
	County	KCK	Total	County	Leavenworth	Total	County	Olathe	Total	County	Overland Park	Total
1996	32.784	64.22	97.004	35.473	47.102	82.575	16.563	26.309	42.872	16.563	10.284	26.847
1997	31.255	62.116	93.371	28.209	45.849	74.058	16.59	25.894	42.484	16.59	9.978	26.568
1998	27.526	58.439	85.965	28.502	47.407	75.909	15.305	24.619	39.924	15.305	9.297	24.602
1999	25.725	55.927	81.652	27.727	48.414	76.141	14.345	25.054	39.399	14.345	8.533	22.878
2000	24.255	52.237	76.492	32.124	51.183	83.307	16.112	25.134	41.246	16.112	8.033	24.145
2001	24.19	53.555	77.745	32.031	54.259	86.29	15.676	24.63	40.306	15.676	7.499	23.175
2002	36.228	48.847	85.075	41.174	54.264	95.438	16.333	24.699	41.032	16.333	7.649	23.982
2003	36.335	48.925	85.260	40.137	55.075	95.212	16.221	24.763	40.984	16.221	7.847	24.068
2004	32.693	46.449	79.142	41.022	54.534	95.556	16.381	24.849	41.23	16.381	9.057	25.438
2005	32.664	43.952	76.616	38.868	54.316	93.184	16.041	24.932	40.973	16.041	9.037	25.078
2006	31.279	42.742	74.021	35.951	52.245	88.196	17.922	24.923	42.845	17.922	9.037	26.959
2007	30.399	41.588	71.987	28.181	52.178	80.359	17.949	24.843	42.792	17.949	8.889	26.838
2008	30.539	40.685	71.224	28.121	52.067	80.188	17.985	25.03	43.015	17.985	8.832	26.817
2009	30.477	40.258	70.735	31.560	49.419	80.979	17.767	23.214	40.981	17.767	8.852	26.619
2010	30.889	40.808	71.697	32.052	49.209	81.261	17.716	24.837	42.553	17.716	8.89	26.606
2011	34.076	40.64	74.716	33.085	49.81	82.895	17.748	24.84	42.588	17.748	8.88	26.628
2012	36.399	45.267	81.666	35.513	49.373	84.886	17.700	24.689	42.389	17.700	12.184	29.884

Budget Year	Sedgwick Co. (Wichita)			Shawnee Co. (Topeka)			Douglas Co. (Lawrence)		
	County	Wichita	Total	County	Topeka	Total	County	Lawrence	Total
1996	28.16	31.443	59.603	32.668	42.184	74.852	25.517	22.867	48.384
1997	28.061	31.47	59.531	36.668	36.053	72.721	25.186	22.672	47.858
1998	30.196	31.225	61.421	37.193	32.588	69.781	24.663	22.674	47.337
1999	29.638	31.253	60.891	36.958	31.671	68.629	25.836	22.596	48.432
2000	28.699	31.406	60.105	37.014	31.785	68.799	24.618	24.353	48.971
2001	28.6	31.359	59.959	35.971	32.574	68.545	24.323	23.904	48.227
2002	28.654	31.474	60.128	40.592	32.447	73.039	27.885	24.727	52.612
2003	28.776	31.845	60.621	40.734	33.129	73.863	27.816	25.563	53.379
2004	28.817	31.905	60.722	43.043	33.224	76.267	29.859	28.097	57.956
2005	28.763	31.828	60.591	42.091	32.391	74.482	29.856	27.859	57.715
2006	28.758	31.898	60.656	41.85	30.653	72.503	30.099	26.375	56.474
2007	31.315	31.953	63.268	41.919	30.747	72.666	30.013	26.358	56.371
2008	31.333	31.979	63.312	41.662	32.457	74.119	29.995	26.787	56.782
2009	30.377	32.056	62.433	40.117	32.682	72.799	32.82	26.647	59.467
2010	29.868	32.142	62.01	40.965	32.592	73.557	32.803	26.693	59.496
2011	29.359	32.27	61.629	41.016	32.85	73.866	35.748	26.7	62.448
2012	29.428	32.36	61.788	43.165	32.928	76.093	35.773	28.612	64.385

Unified Government Taxes Levied Based on Median House Values*, 2006 - 2012

Mill Levy (Year)	Budget Year	Median House Appraised Value*	Unified Govt. Portion of Mill Levy	Real Property Taxes, Unified Govt. Portion	Pct. Chng. from Previous Year
2006	2007	\$73,300	71.987	\$607	---
2007	2008	\$79,900	71.224	\$654	7.8%
2008	2009	\$86,300	70.735	\$702	7.3%
2009	2010	\$77,800	71.697	\$641	-8.6%
2010	2011	\$74,400	74.711	\$639	-0.4%
2011	2012	\$72,300	81.666	\$679	6.2%
2012	2013	\$70,500	81.865	\$664	-2.3%

*Estimated values based on appraiser's market trends.

VILLAGE WEST PROPERTY VALUATION AND TAX COMPARISON

Year	Appraised Value	Assessed Value	Property Taxes¹ Levied
2003	\$85,866,000	\$18,226,000	\$2,807,000
2004	\$157,301,000	\$36,366,000	\$5,631,000
2005	\$176,570,000	\$40,825,000	\$6,385,000
2006	\$246,634,000	\$59,400,000	\$8,837,000
2007	\$369,378,000	\$89,692,000	\$13,355,000
2008	\$430,821,000	\$105,215,000	\$15,636,000
2009	\$291,388,000	\$70,533,000	\$11,337,400
2010	\$305,539,000	\$69,192,000	\$11,551,000
2011	\$336,908,000	\$83,126,000	\$14,316,000

¹Property taxes levied by year are based on the respective year's tax rate. Property taxes include both real and personal.

Note: Beginning in 2011, Hollywood Casino values are included in total.