

Speed (MPH) Prior To Road Work	SIGN SPACING, FT.		BUFFER SPACE, FT.	TAPER LENGTH, FT.				CHANNELIZING SPACING, FT.	
	Non-Divided Highways	Divided Highways	Length	Shoulder (10 ft Width)	Lane (12 ft Width)	Through Taper	Through Buffer/Work Area	Through	Through
0-35	200	200	250	70	245	35	50		
40-45	350	500	360	150	540	40	80		
50-55	500	1000	495	185	660	50	100		
60-70	SA-1000, SB-1500, SC-2640		730	235	840	60	120		
	Urban Low Speed - 100 FT								

APPROVED/ACCEPTED BY:
ENGINEER, OWNER, or PRIME CONTRACTOR

Check for Notice to Proceed.

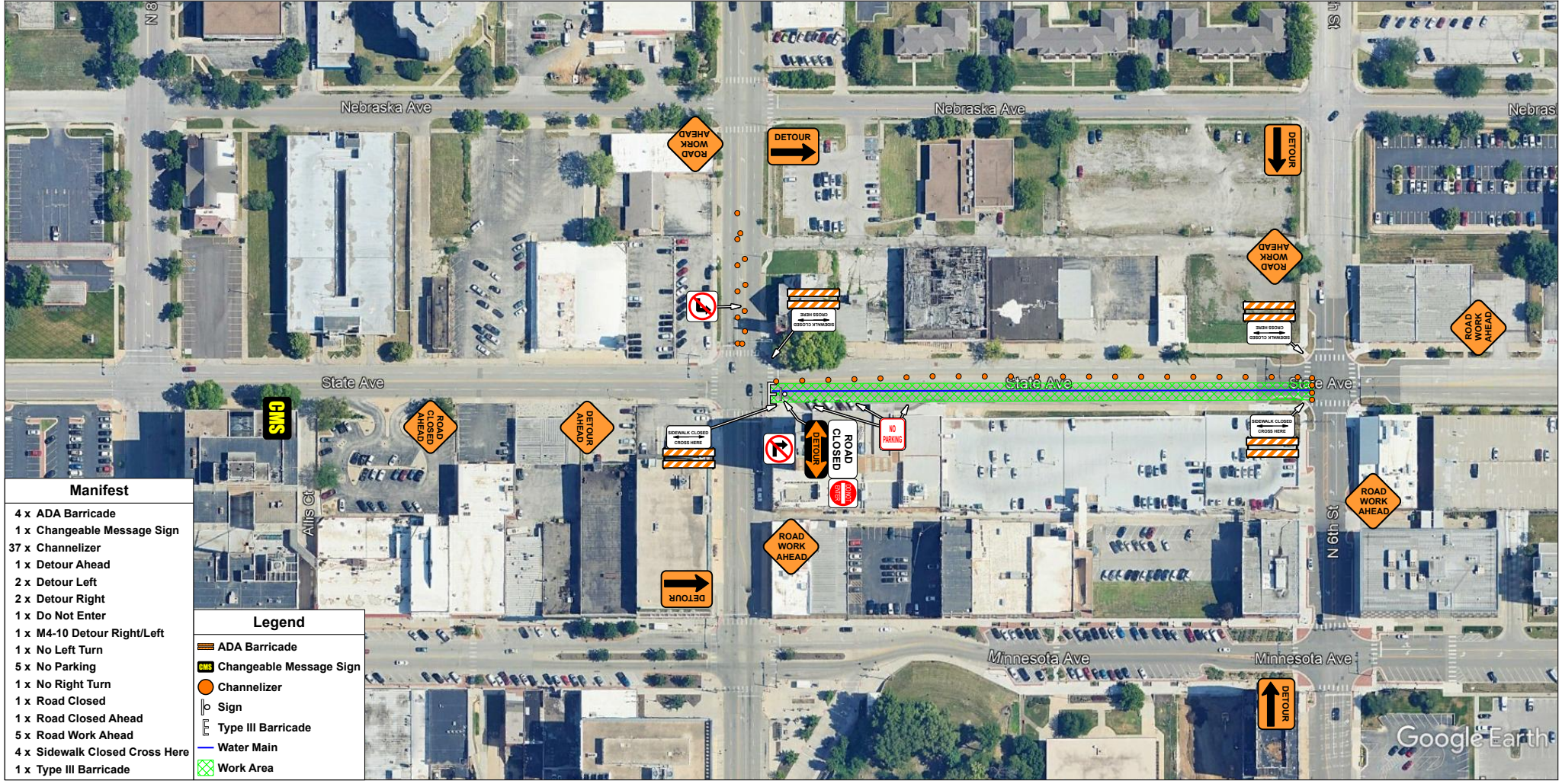
Signature: _____

Company: _____

Road Runner Safety Services, Inc.

Date: 8/27/2024 Project: STATE AVE AT N 6TH TO 7TH ST - EB :
Traffic Control Suggestion For: RODRIGUEZ MECHANICAL :
By: Road Runner Safety Services, Inc. : Nathan

Comments:
Drawing not to scale. Traffic control plan must be approved by an engineer. This is a suggestion only. Road Runners Safety Services, Inc. has no liability for this suggested traffic control plan. Actual placement and spacing of all traffic control devices will depend on field conditions and must conform to MUTCD standards.



- Manifest**
- 4 x ADA Barricade
 - 1 x Changeable Message Sign
 - 37 x Channelizer
 - 1 x Detour Ahead
 - 2 x Detour Left
 - 2 x Detour Right
 - 1 x Do Not Enter
 - 1 x M4-10 Detour Right/Left
 - 1 x No Left Turn
 - 5 x No Parking
 - 1 x No Right Turn
 - 1 x Road Closed
 - 1 x Road Closed Ahead
 - 5 x Road Work Ahead
 - 4 x Sidewalk Closed Cross Here
 - 1 x Type III Barricade

- Legend**
- ADA Barricade
 - Changeable Message Sign
 - Channelizer
 - Sign
 - Type III Barricade
 - Water Main
 - Work Area

Google Earth

Spacing Charts Based on MUTCD			Must be Approved by an Engineer				
Speed (MPH) Prior To Road Work	SIGN SPACING, FT.		BUFFER SPACE, FT.	TAPER LENGTH, FT.		CHANNELIZING SPACING, FT.	
	Non-Divided Highways	Divided Highways	Length	Shoulder (10 ft. Width)	Lane (12 ft. Width)	Through Taper	Through Buffer/Work Area
0-35	200	200	250	70	245	35	50
40-45	350	500	360	150	540	40	80
50-55	500	1000	495	185	660	50	100
60-70	SA-1000, SB-1500, SC-2640 Urban Low Speed - 100 FT		730	235	840	60	120

APPROVED/ACCEPTED BY:
ENGINEER, OWNER, OR PRIME CONTRACTOR
 Check for Notice to Proceed.

Signature: _____

Company: _____

Road Runner Safety Services, Inc.

Date: 8/27/2024 Project: STATE AVE AND N 7TH ST :
Traffic Control Suggestion For: RODRIGUEZ MECHANICAL :
By: Road Runner Safety Services, Inc. : Nathan

Comments:
Drawing not to scale. Traffic control plan must be approved by an engineer. This is a suggestion only. Road Runners Safety Services, Inc. has no liability for this suggested traffic control plan. Actual placement and spacing of all traffic control devices will depend on field conditions and must conform to MUTCD standards.

- ### Manifest
- 6 x ADA Barricade
 - 1 x Arrow Board
 - 3 x Changeable Message Sign
 - 23 x Channelizer
 - 3 x Detour Ahead
 - 5 x Detour Left
 - 4 x Detour Right
 - 1 x Lane Ends (L)
 - 1 x Left Lane Closed Ahead
 - 1 x M4-10 Detour Right
 - 3 x M4-10 Detour Right/Left
 - 1 x No Left Turn
 - 3 x Road Closed
 - 3 x Road Closed Ahead
 - 3 x Road Closed To Thru Traffic
 - 2 x Road Work Ahead
 - 2 x Sidewalk Closed
 - 1 x Sidewalk Closed Ahead Cross Here (L)
 - 1 x Sidewalk Closed Ahead Cross Here (R)
 - 2 x Sidewalk Closed Cross Here
 - 1 x Sidewalk Closed Cross Here (L)
 - 1 x Sidewalk Closed Cross Here (R)
 - 2 x Type I
 - 18 x Type III Barricade

- ### Legend
- ADA Barricade
 - Arrow Board
 - Changeable Message Sign
 - Channelizer
 - Sign
 - Type I
 - Type III Barricade
 - Water Main
 - Work Area

