

WYANDOTTE COUNTY, KS
2024 - 2028

Year 1



Community Health Improvement Plan

CHIP Year 1 - Published May 2024



Public Health
Prevent. Promote. Protect.





This illustration references the mural “Wyandot Echoes” (2007, by artists Duane Dudley, Jose Faus and Alisha Gambino), located at 636 Minnesota Ave. The original mural represents the migrations of members of the Wyandot Nation who, despite great difficulty, built a prosperous town that would grow into what we know today as Kansas City, KS. It is a powerful reminder of our community’s past, and the future we are building together.



Background

A healthier Wyandotte

The Community Health Improvement Plan (CHIP) is a five-year collaborative plan addressing five community-identified priority areas: 1) Health Care Access, 2) Jobs and Education, 3) Violence Prevention, 4) Behavioral Health, and 5) Safe & Affordable Housing.

From plan to action

The Public Health Department (PHD) partners with Lead Agencies, each with expertise in one of the priority areas, to build capacity for the CHIP strategies through the convening and coordination of CHIP Action Teams and Committees. To guide our work, the CHIP has defined objectives and strategies.



OBJECTIVES

How we measure progress



STRATEGIES

How we work toward our goals

Working together, under shared goals

The 2024-2028 CHIP was launched in 2024 as a result of the Community Health Assessment (CHA) process. As a community, we are currently in the CHIP's first year of implementation.



Emerging issues

The PHD has identified additional emerging health issues partners can consider during the annual CHIP revision: tuberculosis (TB), sexually transmitted infections (STIs), chronic conditions (diabetes, hypertension, etc.), and expanding basic primary care services for the uninsured in Wyandotte County.



Structure

Steering Committee

Provides guidance and strategic oversight for the direction and implementation of the CHIP and builds capacity for the application of the three CHIP Lenses.

Wyandotte County Public Health Department

Provides coordination, technical assistance, raises resources, conducts evaluations, and ensures the overall sustainability of the CHIP.

Action Teams + Lead Agencies

The Action Teams address the five CHIP priority areas. Lead Agencies are local organizations that coordinate each of the Action Teams. These Lead Agencies were selected based on subject-matter expertise and capacity to lead the work.



Health Care Access



Jobs & Education



Violence Prevention



Safe & Affordable Housing



Behavioral Health



Committees

Each Action Team has several committees dedicated to addressing one or more of the specific strategies identified in the CHIP.

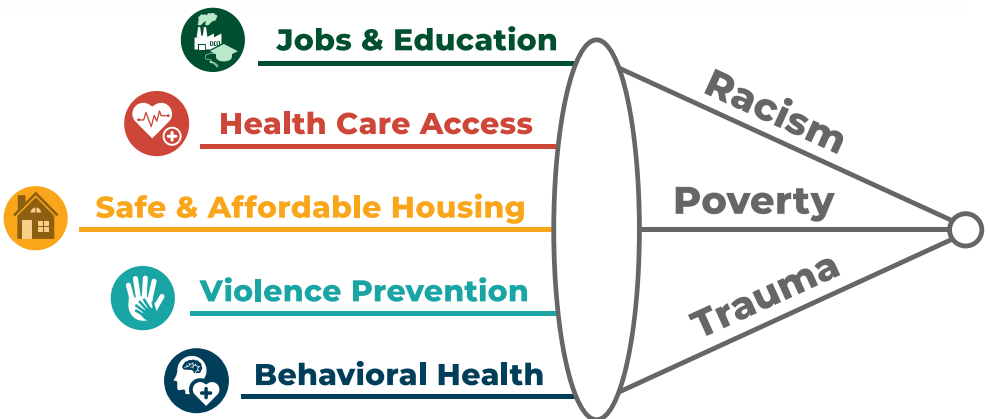
CHIP Lenses

Wyandotte County faces large barriers to being healthy, but these barriers are not experienced equally across our population. Many disparities in health are rooted in systemic and historical inequities in the opportunities and resources made available to our community. These systemic factors—such as those created by **racism, poverty, and trauma**—influence Wyandotte County’s health.

The CHIP refers to these three factors as the “**CHIP Lenses**”, to ensure the goals and strategies pursued by our community through the CHIP **recognize, acknowledge and work** to address poverty, racism and trauma.

The CHIP aims to:

- Acknowledge and confront **systemic racism** in policies and practices that perpetuate health disparities by implementing anti-racist strategies that create systems of equitable access to education, employment, housing, and healthcare for marginalized communities.
- Design strategies to prevent communities from experiencing **deprivation** in health, education, housing, and neighborhood conditions, despite low socioeconomic status.
- Establish **trauma-informed practices** and provide supports to communities affected by historical injustices, recognizing the profound impact of trauma on the mental and physical health of not only individuals but entire communities.





Action Teams

Objectives & Strategies



Behavioral Health



Reduce barriers to **accessing treatment** and other supports, and promote **harm reduction** approaches

Availability of Treatment

Increase mental health and substance use disorder treatment availability by addressing access points and provider capacity

OBJECTIVE

Reduce **emergency departments visits** related to substance use disorders and mental health crises from 3.4% (569 visits per 167,046 residents) to 2.7% by 2028 (ESSENCE, 2023).

STRATEGIES

- Identify and prioritize residential areas with high behavioral health needs and establish **coordinated care teams** to address mental health and substance use disorders (SUD)
- Expand **treatment providers** in the field to include peers, Community Health Workers (CHWs), and other professionals, to enhance accessibility for individuals seeking behavioral health services
- Increase **system integration and coordination** between mental health and SUD services, fostering a holistic approach to treatment and care for individuals with co-occurring conditions
- Increase **access points** for behavioral health services through telehealth





Comprehensive Crisis Response System

Increase capacity for a comprehensive and trauma-informed crisis response system.

OBJECTIVE

Reduce the number of **9-1-1 calls** for mental health and substance misuse reasons from 3,031 calls to 2,728 calls by 2028 (KCKPD, 2021-2023).

STRATEGIES

- Implement evidence-based training programs to mitigate **secondary trauma** experienced by medical professionals and first responders within the comprehensive crisis response system
- Launch a focused campaign to increase public awareness and utilization of the **9-8-8 crisis hotline** as a primary access point for behavioral health emergencies
- Establish protocols and collaborations within the comprehensive crisis response system to deploy **mobile crisis response teams** and create a local crisis response continuum of care, connected to 9-8-8 calls
- Increase capacity for **alternative pathways** to arrest for at-risk youth

Cost of Treatment

Address the **cost of behavioral health services** as a barrier to treatment for community members.

OBJECTIVE

Increase the rate of **people accessing treatment** across community behavioral health providers in Wyandotte County (Data Pending).

STRATEGIES

- Develop and disseminate resources to inform patients about available **payment assistance** options and self-pay costs to reduce the financial burden of treatment
- Explore grant opportunities and other **funding models** to support the costs of treatment for community members in need of financial assistance



Harm Reduction

Expand harm-reduction approaches to prevent overdose and infectious disease transmission.

OBJECTIVE

Reduce **overdose death rate** from 37 per 100,000 to 20.7 per 100,000 by 2028 (KDHE Vital Stats, 2021).

STRATEGIES

- Increase access to **Fentanyl test strips, Narcan**, and implement **needle exchange programs** in community spaces to reduce overdoses and infectious disease transmission
- Increase access and availability of **Medication Assisted Treatment (MAT)** by collaborating with healthcare providers, treatment centers, and community organizations
- Organize community groups around **policy changes** that support **harm-reduction** approaches, such as Overdose Good Samaritan laws



Reduce Bias & Stigma

Reduce bias and stigma towards people seeking treatment for using drugs or experiencing a mental health condition.

OBJECTIVE

Increase the rate of **people accessing treatment** across community behavioral health providers in Wyandotte County (Data Pending).

STRATEGIES

- Partner with local school districts in Wyandotte County to implement evidence-based **mental health curriculums**, including suicide prevention
- Develop and implement culturally sensitive education campaigns to address **harmful social norms** related to substance use, stigma, and related behaviors
- Implement targeted **recruitment strategies** within organizations to actively recruit and employ individuals with firsthand experiences related to substance use or mental health

Jobs & Education



Reduce **barriers** to employment and educational opportunities, and increase **median household income**



Adult Training & Education

Increase access to adult education and training opportunities.

OBJECTIVE

Increase the percent of residents who have completed a **post-secondary credential** (associate's degree or higher) from 32.3% to 38.7% by 2028 (US Census Bureau ACS, 2022).

STRATEGIES

- Support higher education institutions and businesses in **expanding access** to GED and ESL and other workforce training programs
- Expand employer participation in **apprenticeship programs** and other industry-recognized credentials



Education to Employment Pipeline

Build a strong talent pipeline from high school to college or career for Wyandotte youth.

OBJECTIVE

Increase the percent of residents with a **high school diploma or equivalent** from 86.2% to 91% by 2028 (US Census Bureau ACS, 2022).

STRATEGIES

- Increase employers offering **internships/apprenticeships**, Earn While You Learn, and career placement opportunities, for those aged 16-18 years-old
- Support and **expand Diploma+** (or similar approaches) in all Wyandotte school districts to support access to postsecondary/industry credentials





Workforce Transportation

Increase access to public and alternative transportation options for the Wyandotte workforce.

OBJECTIVE

Increase the percent of residents who commute to work using public transit from 1% to 2% (Census Bureau ACS, 2018-2022).

STRATEGIES

- Increase the marketing and local education of **public transportation solutions** for job access
- Increase **public transit and other on-demand or microtransit** options to employers, and develop customized solutions when possible



Fair Chance Hiring

Increase the hiring of justice-involved individuals.

OBJECTIVE

Increase the **employment rate of justice-involved individuals** from 59% to 75% by 2028 (KDOC, 2023).

STRATEGIES

- Build capacity for **re-entry support services** to help reduce barriers to career/training and employment for people who are justice-involved
- Connect employers to local non-profits, career and workforce development centers to **identify and recruit** formerly incarcerated people who can fill talent gaps
- Establish **trainings and forums** for employers to increase access to and highlight the benefits of hiring and retaining qualified justice involved individuals
- Support **automated expungement** as a workforce strategy, increase education on the expungement process and current services available for individuals who have been involved in the justice system



Child Care Access

Increase access to quality and affordable child care by focusing on the recruitment and retention of providers.

OBJECTIVE

Retain 2,502 **full time, licensed child care** slots among both **in-home providers and centers**, while working to increase new licensed slots (KS Child Care Aware, 2023).

STRATEGIES

- Build and stabilize the child care workforce by engaging educational institutions on developing **early childhood career pathways** for students
- Support the **retention and expansion** of quality child care centers to increase access for families
- Increase **training and support to child care providers**, both centers and in-home, through the efforts of The Family Conservancy's Start Young Program and UG Child Care Licensing
- Increase awareness and participation in available **child care tax credits** among local employers
- Identify barriers experienced by **new or expanding** child care providers and advocate for solutions
- Explore local, state, and federal policy opportunities to increase **child care investments** in Wyandotte County, increasing wages, provider benefits, and lowering start-up costs



Health Care Access



Assure access to **health care for all**, and improve the **capacity of the health care system**



Community Health Workers

Increase the number and reach of certified community health workers (CHWs) in Wyandotte County.

OBJECTIVE

Increase the **number of certified CHWs** in Wyandotte County from 37 to 53 by 2028 (Kansas Community Health Worker Coalition, 2024).

STRATEGIES

- Streamline the **recruitment and training** of new CHWs in partnership with the Community Health Council (CHC) and the Kansas Community Health Worker Coalition, prioritizing placement in safety net clinics
- Address the gap in **CHW payment structure** by exploring sustainable funding models and value-based reimbursements, including policy change that allows for reimbursement through Medicaid
- Improve **cost transparency** with upfront information, offer educational classes on insurance terminology, and raise awareness of patient rights under the Good Faith Estimate Bill and No Surprises Act



Transportation to Health Care

Increase transportation options to health care appointments.

OBJECTIVE

Decrease the rate of **missed primary care appointments** among safety-net clinics (Data Pending).

STRATEGIES

- Increase **transportation options** to primary care appointments and other locations relevant to the continuity of care, like pharmacies, behavioral health and specialists
- Collaborate with local pharmacies to offer **prescription delivery services** and inform patients about current delivery systems

Health Care Access



Place-Based Healthcare

Develop innovative place-based strategies to enhance access to primary care services in Wyandotte County.

OBJECTIVE

Increase the percent of residents who have a **routine primary care check-up** from 70.6% to 84.7% in 2028 (Kansas Health Matters, 2021).

STRATEGIES

- Implement **community paramedicine** models to offer preventative and routine care, expanding the reach of health care services
- Increase capacity for **mobile and pop-up/neighborhood-based clinics** in local neighborhoods



Medicaid Expansion, Enrollment and Acceptance

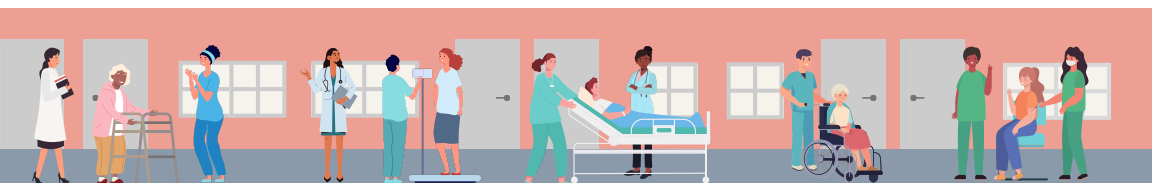
Advocate for Medicaid expansion and increase the number of providers that accept it.

OBJECTIVE

Reduce the percentage of **people who are uninsured** (population 65 and under) from 16% to 14.4% by 2028 (US Census Bureau SAHIE, 2020).

STRATEGIES

- Coordinate and improve efforts to increase **community member enrollment** and awareness of Medicaid & Marketplace health insurance plans
- Advocate for **Medicaid expansion** in Kansas



Violence Prevention



Foster **safer neighborhoods, free from violence** through policy, systems, and environment changes



Community Connectedness

Build community connectedness by promoting built environment changes and prosocial events and activities.

OBJECTIVE

Increase the **Community-for-All-Ages** standard in Wyandotte County from Bronze to Gold by 2028 (MARC, 2023).

STRATEGIES

- Collaborate with community groups to implement **placemaking strategies** and CPTED principles, fostering community connectedness through built environment changes and active transportation
- Empower community members by facilitating the creation of groups and activities that foster **connection and engagement**
- Implement the **Complete Streets Ordinance** to connect people of all ages, abilities and modes of transportation across neighborhoods



Enhance Support for Youth & Families

Support youth and families who are at a higher risk of violence and trauma by increasing trauma-informed, wrap-around services.

OBJECTIVE

Reduce **emergency department visits** due to firearms for 16–24-year-old young adults from 179.0 per 100,000 to 161.1 per 100,000 by 2028 (ESSENCE, 2023).

STRATEGIES

- Support individual-level responses and interventions for survivors of interpersonal violence and those at risk of perpetration of violence through REVIVE, a hospital-based violence intervention program
- Develop recommendations and implement strategies based on **youth fatality case reviews**
- Increase the use of **conflict resolution and restorative justice** practices with youth in school settings



Violence Prevention



Proven Prevention Strategies

Expand the reach of proven violence prevention strategies and programs.

OBJECTIVE

Increase the percent of youth who answer, 'Yes' to 'There are people in my community, who **encourage me to do my best.**' from 46.1% to 50.7% by 2028 (KCTC, 2022).

STRATEGIES

- Promote **social norms change** within neighborhoods, particularly among youth, through community-led programming
- Support cross-sharing among organizations that provide opportunities for **youth leadership, engagement, and mentoring**
- Build capacity to implement **evidence-based interventions** to address healthy relationships, consent, and forms of violence like sexual & child abuse



Gun Violence Prevention

Increase availability of programs and education that focus on crime prevention and gun violence.

OBJECTIVE

Reduce the **rate of firearm fatalities** from 30 per 100,000 to 24 per 100,000 by 2028 (County Health Rankings, 2017-2021).

STRATEGIES

- Develop and promote initiatives related to **gun safety education** across diverse community settings
- Establish a **signage program** for federally registered gun sellers to prominently display information about the importance of safe storage options
- Expand distribution networks to increase the availability of **free, high-quality gun locks** at various community locations
- Support evidence-based **Group Violence Intervention (GVI)** to collaboratively address and mitigate homicide and gun violence through community-led deterrence and coordinated efforts involving law enforcement, social service providers, and community members

Safe & Affordable Housing



Reduce **barriers to access housing**, including the associated costs of staying in the home



Affordable Housing Units

Increase the number of affordable housing units available in Wyandotte County.

OBJECTIVE

Reduce the 4,153-unit affordable housing gap by 50% over 5 years by developing 2,075 affordable units (\$650/month) or 415 units per year (MARC Regional Housing Hub, 2022).

STRATEGIES

- Incentivize the **acceptance of housing vouchers** for Section 8 tenants, working in tandem with landlords
- Support the Community Benefits Advisory Board in developing the **Affordable Housing Trust Fund** as referred in the Community Benefits Ordinance
- Explore **inclusionary zoning policies** requiring developers to set aside a percentage of housing units to be sold or rented at below-market prices
- Collaborate with neighborhood associations to identify and develop **landbank opportunities**



Cost Burden for Homeowners

Reduce the cost burden of property taxes and utilities on low-income homeowners.

OBJECTIVE

Prevent 100% of owner-occupied **properties** from being sold on the tax sale, to reduce displacement among low-income homeowners.

STRATEGIES

- Increase awareness and utilization of property **tax and utility rebates**
- Develop a comprehensive understanding of the **impact of delinquent taxes** on homeowners through a combination of a homeowner impact study, community listening sessions and partnerships



Safe & Healthy Rentals

Increase the availability of programs and support policies to ensure landlords keep rental homes safe and healthy.

OBJECTIVE

Decrease the percent of residents living with **severe housing problems**, including overcrowding, lack of kitchen, or lack of plumbing facilities from 18% to 16% by 2028 (Kansas Health Matters, 2015-2019).

STRATEGIES

- Expand the lead program to increase capacity for **lead testing and abatement** in housing environments
- Establish a **rental registry** and explore a **rental inspection** program to address housing quality, safety, and compliance with regulations



Tenant Rights

Expand policies and programs that promote the rights of tenants.

OBJECTIVE

Decrease the percent of residents that **experience an eviction** from 6 per 1,000 residents to 5.4 per 1,000 by 2028 (WYCO Sheriff's Office, 2023).

STRATEGIES

- Increase **tenant education** on the eviction process and provide resources around pre-filing
- Provide **legal support and mediation** for evictions for community members that are low-income or may be undocumented
- Develop and evaluate a **right-to-counsel policy**
- Develop and evaluate a policy to **prohibit source of income discrimination** for beneficiaries of housing voucher programs
- Initiate the creation of a **tenant rights organization/group**

Safe & Affordable Housing



Unhoused Populations & Homelessness

Increase resources for unhoused individuals in Wyandotte County, including resources to obtain housing.



OBJECTIVE

Reduce the number of **people experiencing chronic homelessness*** by 50% from 35 to 17 in 2028 (GKCCEH Point-in-Time Count, 2021-2023).

STRATEGIES

- Increase community awareness of the **Housing First** model and **Functional Zero** principles
- Collaborate with housing providers to encourage and utilize **full implementation** of the Housing First Model
- Increase the availability of episodic and permanent **supportive housing** options, particularly for youth and at-risk community members experiencing homelessness, through partnerships and resource allocation
- Establish a **Wyandotte County Homeless Coalition** to comprehensively address homelessness within the community and support regional approaches to ending homelessness

**Chronic homelessness is defined as those experiencing homelessness for longer than one year or four or more times in the last three years (Greater KC Coalition to End Homelessness, 2023).*





UG Collaboration

Thank you to the following UG Departments for their dedication to improving health in Wyandotte County! UG Departments are **engaged across all five CHIP areas**, and many do significant work in these areas beyond the strategies listed within the CHIP. The list below covers areas where their activities intersect with specific strategies within the plan. Those marked with an asterisk are CHIP strategies to explore collaboration on throughout the 2024-2028 CHIP process.



Safe & Affordable Housing

Land Bank

- > Land bank opportunities for housing*

Community Benefits Advisory Board

- > Affordable housing trust fund*

Livable Neighborhoods

- > Minor home repair

Neighborhood Resource Center

- > Rental licensing and inspections

Community Development

- > Home Repair Program

Public Health Department

- > Lead hazard remediation program (kNOw Lead KCK) > Legal support and mediation for evictions (Kansas Legal Services) > Tenant Toolkit (CHEP)

KCK Fire Department

- > Support of cooling and warming shelters

Delinquent Real Estate

- > Assist homeowners with payment arrangement before UG Tax Sale

Clerk's Office

- > Promoting sales tax and utility tax rebates for homeowners > Assistance with applications for Property Tax Rebates from the State of Kansas for qualified homeowners

Lobbyist

- > Advocating for state policies related to affordable housing in accordance with the UG Kansas Legislative Agenda



UG Collaboration



Behavioral Health

Public Health Department

> Distributing naloxone and fentanyl test strips > Substance use recovery peer support program > Social needs and substance use screenings for clinic clientele > Healthy Families Wyandotte

KCK Police Department

> Administering naloxone > Crisis Intervention Team (CIT) Training > Mental health co-responders with CIT officer > Secondary trauma support for first responders* > Stepping Up initiative > Fentanyl Education

KCK Fire Department

> Distributing and administering naloxone > CIT Training* > Secondary trauma support for first responders* > Community paramedicine*

WyCo Sheriff's Office

> Administering naloxone > Mental health co-responder > Stepping Up initiative > Behavioral health liaison services > Behavioral health screenings and referrals for children in police protective custody

WyCo District Court & Community Corrections

> Substance use recovery peer support program > Alternative pathways to arrest for at-risk youth > Behavioral Health and Drug Courts > Care & Treatment Court > Stepping Up initiative

Lobbyist

> Advocating for state policies related to substance use in accordance with the UG Kansas Legislative Agenda



Jobs & Education

Public Health Department

> Expanding affordable childcare spaces > High School Real World Learning > Teen pregnancy prevention case-management program

Community Corrections

> Support for re-entry from jail/prison*

WyCo District Attorney's Office

> Criminal history expungement fairs



UG Collaboration



Health Care Access

Public Health Department

> Transportation to safety net clinics (WYCO Health Link) > Mobile/pop-up clinics > Health Equity Task Force > Universal home visiting > Medicaid Presumptive Eligibility applications > Community health workers for maternal and refugee populations

Transportation Department

> Transportation to safety net clinics (WYCO Health Link) > Marketing public transportation options*

Lobbyist

> Advocating for state policies related to healthcare access in accordance with the UG Kansas Legislative Agenda



Violence Prevention

KCK Police Department

> Gun safety education > Gun lock program > Focused deterrence > Alternative pathways for at-risk youth > Crime Gun Intelligence Center (CGIC) > Risk for retaliation assessments

Area Agency on Aging

> Communities for All Ages

Livable Neighborhoods

> Building community connectedness > Crime Prevention Through Environmental Design (CPTED) > Communities for All Ages

Planning & Urban Design

> Connecting neighborhoods through Complete Streets > Communities for All Ages

Public Works

> Connecting neighborhoods through Complete Streets

Thank you to our Partners!

AdHoc Group Against Crime
Aetna Better Health of Kansas
Alliance for a Healthy Kansas
American Red Cross
Archdiocese of Kansas City in Kansas
Argentine Betterment Corporation
Armourdale Renewal Association
Avenue of Life
Bethel Neighborhood Center
BikeWalkKC
Caritas Clinics - Duchesne Clinic
Catholic Charities of Northeast Kansas
Central Avenue Betterment Association
Central United Methodist Church
Children's Mercy Hospital
Churches United for Justice
Clean Air Now KC
Community Care Network of Kansas
Community Health Council of Wyandotte
County
Community Housing of Wyandotte
County
Connections To Success
Cornerstones of Care
Cross-Lines Community Outreach, Inc
Department of Veteran's Affairs
Donnelly College
Douglas Sumner Neighborhood
Downtown Shareholders
Economic Opportunity Foundation
Eden's Village
El Centro, Inc.
Enough is Enough - KCKPS
The Family Conservancy
Family Counts and Consultants, LLC
Frank Williams Center - WBHN
Friends of Yates
Frontiers - KUMC
Good Morning Health
Grandparents for Gun Safety
Groundwork NRC
Habitat for Humanity Kansas City
Health Forward Foundation
Heart to Heart International
Heartland 180
Heartland Regional Alcohol & Drug
Assessment Center (RADAC)
The Hub Argentine
JayDoc Clinic
JUNTOS
Kansas City Area Transportation Authority
Kansas City Digital Drive
Kansas City, Kansas Chamber of
Commerce
Kansas City, Kansas Community College
Kansas City Kansas Housing Authority
Kansas City, Kansas Police Department
Kansas City, Kansas Public Schools/USD
500
Kansas City, Kansas Public Schools Police
Department
Kansas City Medical Society Foundation
Kansas City, Missouri Health Department
Kansas City Research Institute

Thank you to our Partners!

Kansas Department of Commerce

Kansas Department of Corrections

Kansas Department of Health and
Environment

Kansas Legal Services

Kansas News Service

KC Farm School

Kensington Neighborhood

Kim Wilson Housing - WBHN

K-State Research & Extension

Learning Lab

Leavenworth Road Association

Local Initiatives Support Coalition (LISC)

A Loving Space Foundation

Made Men

Masonic Cancer Alliance - KUMC

Mercy and Truth Medical Missions

Metro Lutheran Ministry

Metropolitan Organization to Counter
Sexual Assault (MOCSA)

Mid-American Regional Council (MARC)

Mission Adelante

Oak Street Health

Olivet Institutional Baptist Church

Orange EV

OurSpot KC

PACES - WBHN

Salem Baptist Missionary Church

The Shepard's Center

Sunflower Health Plan

Sunflower House

Swope Health

Turner School District/USD 202

Unified Government of Wyandotte

County, Kansas City, KS, Budget Office

Unified Government of Wyandotte

County, Kansas City, KS, Mayor's Office

Unified Government of Wyandotte

County, Kansas City, KS, Strategic

Communications

United Healthcare KanCare

University of Kansas Center for

Community Health and Development

University of Kansas Landon Center on

Aging

University of Kansas Medical Center

University of Kansas School of Nursing

The Village Initiative

Vibrant Health

Victim's Services Unit - KCKPD

Workforce Partnership

Wyandot Behavioral Health Network

(WBHN)

Wyandotte Economic Development

Council

Wyandotte Health Foundation

WyCo Mutual Aid

Young Women On the Move

Youth Ambassadors

Youth Violence Prevention Center-

KC/ThrYve

How to Get Involved in the

The best way to get involved is to look at the strategies in each of the priority areas and identify overlap with your interests or the work of your organization.

Reach out to the Health Department or one of the Lead Agencies to learn more about how you can get connected and support the work. Together, we can make strides towards a healthier Wyandotte County.



Jobs & Education



(913) 371-3198
info@wyedc.org



Health Care Access



(913) 342-2552
info@vibranthealthkc.org



Behavioral Health



Wyandot
Behavioral Health Network

(913) 233-3300
wyandotbhn.org



Safe & Affordable Housing



(913) 281-3388
info@cross-lines.org



Violence Prevention



(816) 285-1378

communityprevention@mocsa.org



(913) 573-8737

livableneighborhoods@wycokck.org



(913) 897-8543
thryve@ku.edu



For all general
CHIP inquiries



Public Health
Prevent. Promote. Protect.

(913) 573-8855
wypublichealth@wycokck.org

Learn more about



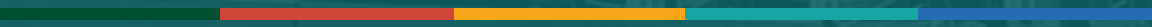
wycokck.org/CHIP

SCAN
ME!



ONE
DOWELL
PLAZA

CITY
HEALTH CENTER
PARKING



A special thank you to our sponsors:



Health Forward
FOUNDATION



Wyandotte
Health
Foundation

American Rescue Plan Act (ARPA)

This project is being supported, in whole or in part, by federal award number SLFRP3214 awarded to Unified Government of Wyandotte County by the U.S. Department of the Treasury.



Public Health
Prevent. Promote. Protect.

CHIP booklet produced by:
Wyandotte County Public Health Department
619 Ann Ave, Kansas City, KS 66101
(913) 573-8855
wycokck.org/health